

FJD Titan

Robotic Mower



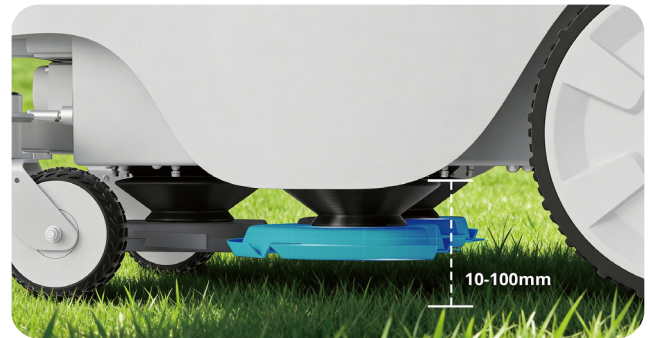
Elite 2-in-1 Turf Care. Without the Elite Price.

Powered by a three-layer guidance system, the FJD Titan serves as a 2-in-1 solution that delivers elite mowing and precise line-marking for golf courses and sports fields.

UNMATCHED EFFICIENCY & QUALITY

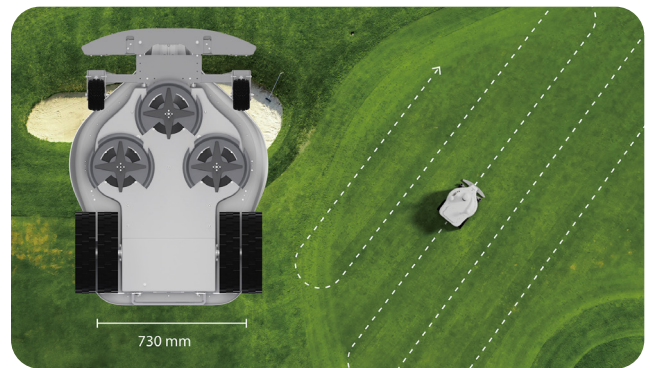
Adjustable Cut Height

Adjust cutting height from 10–100 mm in-app to match turf type and season.



Wide-Cut Productivity

730mm cutting width delivers high daily output—up to 36,000 m² (9 acres) per day.



3-Layer Guidance System

Dual-antenna RTK GNSS, LiDAR, and Vision work together for stable positioning and obstacle avoidance.



UNIFIED OPERATIONS MANAGEMENT



One Scan, Endless Reusability

Map in minutes with the FJD Trion P2 LiDAR Scanner—no manual driving. Create a digital asset shared across your entire fleet.



Multi-Field Management

Automated multi-field mowing with seamless transition between task areas.

SPECIFICATIONS

Mowing Capacity

Max mowing area *	72 h Maximum coverage 108,000 m ² (26.7 acres) 24 h Maximum coverage 36,000 m ² (9 acres)
Max mowing area per charge	18,000 m ² (4.5 acres)
Max climbing ability	25° / 46%
Boundary type	Virtual wire
Cutting mode	Customized angle mowing

Overall Dimensions

Weight	122 kg (287 lbs)
Dimensions	1400×1050×650 mm / 55.1×41.3×25.6 in.
Software update	OTA
Connectivity	4G, Wireless Connectivity
Operating temperature	0–55°C (32–131°F)
IP rating	IP64

Cutting System

Cutting height	10–100 mm / 0.4-4 in.
Cutting width	730 mm (260 mm each) / 28.7 in. (10.2 in. each)
Travel speed	0–3.6 km / h (0–2.2 mph)
Cutting disc (pivoting razor blades per disc*)	3

Battery & Charging

Charging mode	Manual & automatic
Fast battery swapping	<input type="radio"/>
Mowing time per charge	480 min
Charging time	120 min

Positioning & Navigation

Positioning	RTK + LiDAR + Vision
NTRIP	<input checked="" type="radio"/>
FJD base station & CORS station	<input checked="" type="radio"/>

Factory Configuration

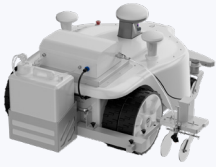
Complete mower	<input checked="" type="radio"/>
Auto-charging station	<input checked="" type="radio"/>
2 kWh battery	<input checked="" type="radio"/>
High-strength cutting blade	<input checked="" type="radio"/>
FJD Trion V4e Pro	<input checked="" type="radio"/>
FJD base station	<input checked="" type="radio"/>
GPS module	<input type="radio"/>
Independent anti-theft module	<input type="radio"/>

*Calculated based on 24-hour operation. Actual coverage depends on user working hours.

* Optional / Standard / - Unavailable

TITAN × LINE MARKER KIT

Paired with the line marker kit, the Titan delivers exceptional line-marking precision and efficiency.



Reduce paint usage by 50%+



Cut labor costs by up to 90%



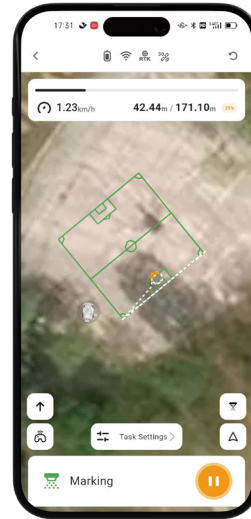
Mark up to 10 standard soccer fields per charge

SMART MAPPING. SEAMLESS MARKING



Convenient Mapping with FJD Trion V4e Pro

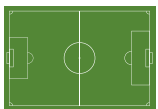
Create field maps in minutes using the FJD Trion V4e Pro—no need to bring the robot to the site.



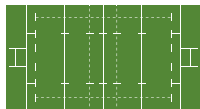
Seamless Spray Resume

Whether switching fields or pausing to refill paint, the robot resumes precisely where it left off—no overlapping, no wasted paint.

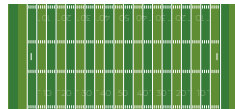
APPLICATION SCENARIOS



Soccer



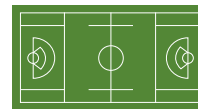
Rugby



American Football



Baseball



Lacrosse



Others

LINE MARKER KIT

Weight	33 kg (72.8 lbs)
Dimensions	600×1300×700 mm / 23.6×51.2×27.6 in.
IP rating	IP54
Max marking speed	3.6km/h (2.2 mph)
Paint tank capacity	25L / 5.5 gal
Line width range	60-120 mm / 2.4-4.7 in.
Nozzle height	30-120 mm / 1.2-4.7 in.
Operating temperature	5-35°C (41-95°F)
Max marking time per charge	7.5h



Facebook



Instagram



LinkedIn



Youtube



Website



APP

Free Quote: fjdmower@fjdynamics.com
Address: 15 SCOTTS ROAD #03-12, Singapore

CREATE FOR A BETTER WORLD

Copyright © FJDynamics. All rights reserved.

FJDynamics.com

