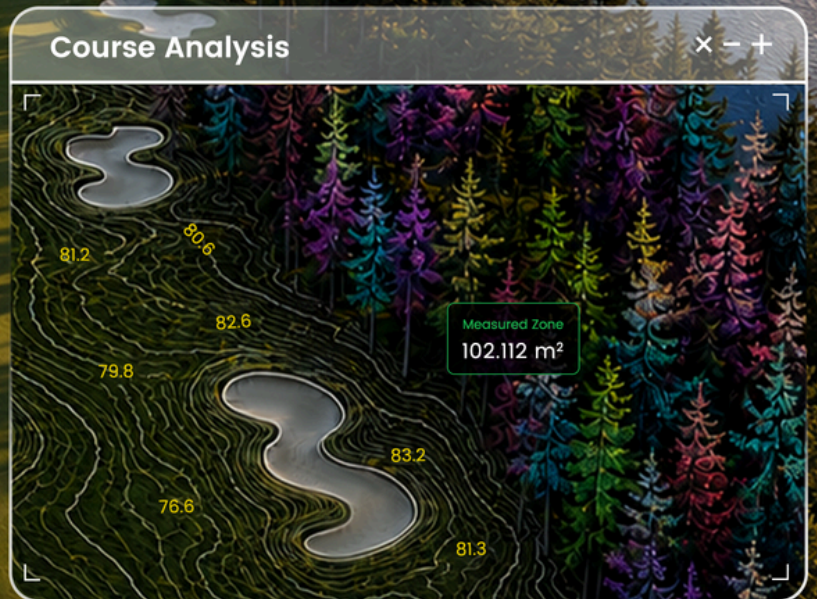


GolfMind

A Real 3D Platform for Smarter Golf Course Operations



Know Your Course. Plan With Real Data.

Why GolfMind

GolfMind turns real course scans into searchable, measurable, and practical course data for golf course maintenance and planning.



50%

Fewer Manual Course Checks



30%

Less Crew Coordination



24/7

Searchable Work Records



60%

Lower Repeat Surveying Cost*

What GolfMind Helps You Manage



Contour Maps & Terrain View

See slopes, elevation changes, low spots, and drainage patterns across the course.

Applications

Drainage Planning Irrigation Updates Renovation

Low Spot Review



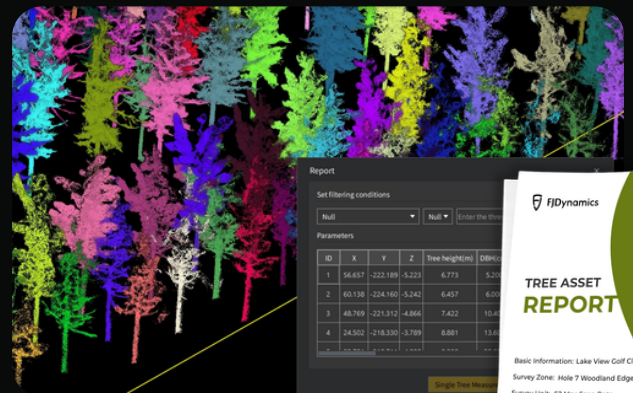
Tree Assets Report

Track tree locations, counts, density, and maintenance notes in one searchable record.

Applications

Tree Inventory Pruning Plans Safety Review

Landscape Planning



Report

Set filtering conditions

Null Null Filter the data

Parameters

ID	X	Y	Z	Tree height(m)	Diameter
1	56.657	-222.189	-5.223	6.773	5.20
2	60.136	-224.160	-5.242	6.457	6.00
3	48.769	-221.812	-4.866	7.422	10.4
4	24.902	-218.330	-3.789	8.881	13.6

Single Tree Maintenance



*Based on internal estimates. Actual results may vary by course size, workflow, data quality, existing maintenance process, and local surveying costs.

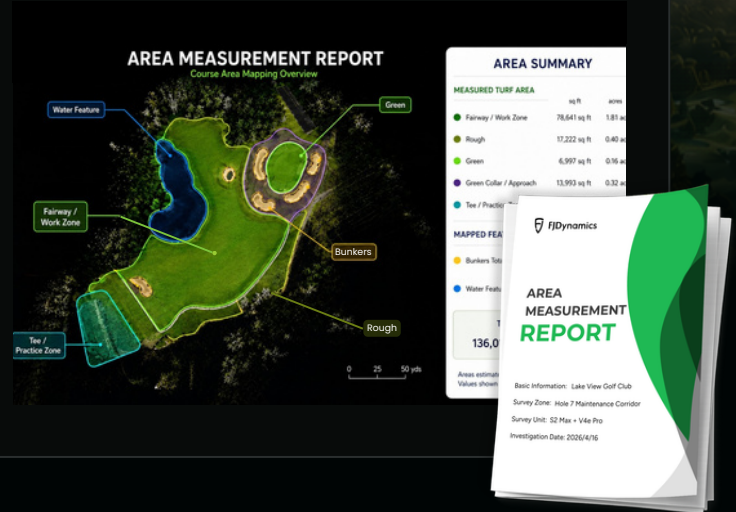


Area Measurements

Measure fairways, roughs, bunkers, repair zones, and application areas to plan materials, labor, and budgets with less guesswork.

Applications

Spraying Fertilization Topdressing Cost Control



Irrigation & Field Asset Map

Map sprinklers, control boxes, valves, drainage points, and field assets as searchable layers on your 3D course map — so teams know where to inspect, repair, update, or dig before work begins.

Applications

Asset Inspection Repair Work Field Checks System Updates



Plan Mowing with Clear Course Data

Clearer Work Zone

Plan fairways, roughs, open areas, and maintenance zones from mapped course data.

Better Task Estimates

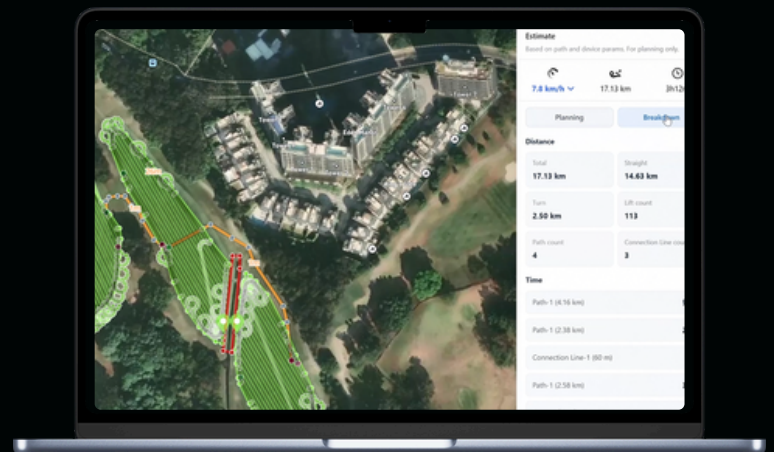
Preview the task before delivery.

Easier Team Alignment

Share mowing zones, boundaries, and work notes clearly.

Work Review Records

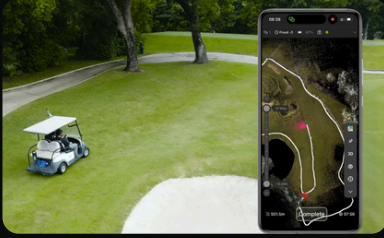
Review completed areas, missed zones, task notes, and follow-up.



How GolfMind Works

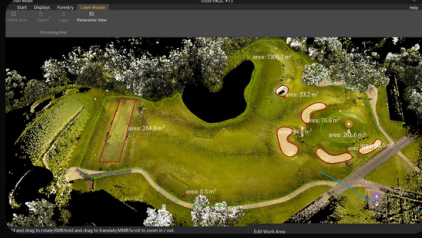
01

Map the Course



02

Visualize Course Data



03

Export Reports



Powered by S2 Max and V4e Pro



S2 Max | Real 3D Course Scanning

Captures terrain, trees, bunkers, paths, water areas, and course structures to build a real 3D course model.



V4e Pro | Geospatial Course Marking

Marks boundaries, no-go zones, transition routes, sprayheads, assets, and work areas with geospatial accuracy.




Book a Demo

Get a deployment consultation for your course



Follow GolfMind Updates

 [FJDynamics.com](https://www.fjdynamics.com)

 fjdmower@fjdynamics.com