



AREA MEASUREMENT REPORT

Basic Information: Lake View Golf Club

Survey Zone: Hole 7 Maintenance Corridor

Survey Unit: S2 Max + V4e Pro

Investigation Date: 2026/4/16



AREA MEASUREMENT REPORT

Table of Content

| | |
|---------------------------------------|----|
| Survey Scope & Data Source | 01 |
| Area Measurement Report | 02 |
| Area Summary | 03 |
| Bunker / Sand Zone Measurement | 04 |
| Bunker Planning Note | 05 |
| Turn Area Data Into Material Planning | 06 |



Survey Scope & Data Source

The survey covers selected playable and maintenance areas within Hole 7, including:

- Fairway / Work Zone
- Green
- Green Collar / Approach
- Rough
- Tee / Practice Zone
- Bunkers
- Water Feature
- Repair or application zones where marked

Data Source

- S2 Max: 3D terrain scan, point cloud data, surface reference
- V4e Pro: field marking for boundaries, zones, and asset references
- GolfMind: area calculation, zone classification, report output

Important Measurement Note

Some zones may overlap depending on how they are used. For example, an application area may sit inside a fairway or rough zone. Overlapping layers should not be added together unless they are defined as exclusive mapped areas.



AREA MEASUREMENT REPORT

Course Area Mapping Overview



AREA SUMMARY

MEASURED TURF AREA

| | sq ft | acres |
|-------------------------|--------------|------------|
| Fairway / Work Zone | 78,641 sq ft | 1.81 acres |
| Rough | 17,222 sq ft | 0.40 acres |
| Green | 6,997 sq ft | 0.16 acres |
| Green Collar / Approach | 13,993 sq ft | 0.32 acres |
| Tee / Practice Zone | 5,920 sq ft | 0.14 acres |

MAPPED FEATURES

| | sq ft | acres |
|------------------------------------|-------------|------------|
| Bunkers Total — 5 bunkers measured | 4,090 sq ft | 0.09 acres |
| Water Feature | 9,149 sq ft | 0.21 acres |

TOTAL MAPPED AREA

136,012 sq ft | **3.12 acres**

Areas estimated from 3D course data.
Values shown in sq ft and acres.



Area Summary

| Area / Feature | sq ft | acres | m ² | Planning Use |
|------------------------------------|--------------|------------|------------------------|---|
| Fairway / Work Zone | 78,641 sq ft | 1.81 acres | 7,306.0 m ² | Mowing, fertilization, spraying, topdressing, work planning |
| Rough | 17,222 sq ft | 0.40 acres | 1,600.0 m ² | Mowing, weed control, overseeding, rough maintenance |
| Green | 6,997 sq ft | 0.16 acres | 650.0 m ² | Green surface reference, maintenance planning |
| Green Collar / Approach | 13,993 sq ft | 0.32 acres | 1,300.0 m ² | Approach care, topdressing, turf recovery |
| Tee / Practice Zone | 5,920 sq ft | 0.14 acres | 550.0 m ² | Tee maintenance, mowing, treatment planning |
| Bunkers Total — 5 bunkers measured | 4,090 sq ft | 0.09 acres | 380.0 m ² | Sand refill, bunker renovation, labor planning |
| Water Feature | 9,149 sq ft | 0.21 acres | 850.0 m ² | Boundary reference, safety planning |

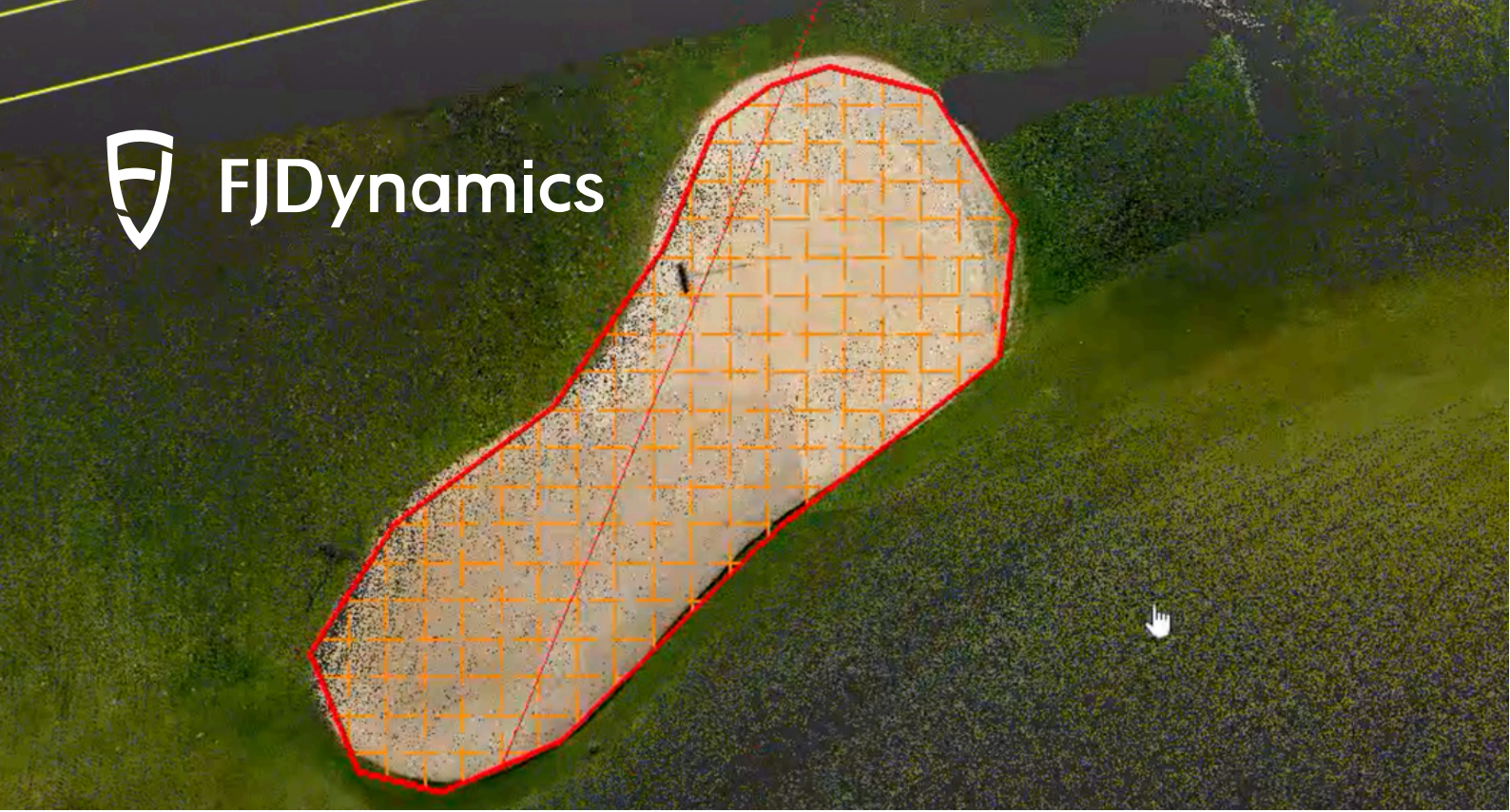


Bunker / Sand Zone Measurement

The mapped area includes **5** measured bunkers with a combined sand area of 4,090 sq ft / 0.09 acres / 380.0 m². This information can support bunker maintenance planning, sand refill estimates, renovation discussions, edging work, and contractor quotations.

| Bunker Group | Quantity | Total Area | Average Area per Bunker | Planning Use |
|---------------|-----------|---|---------------------------------|---|
| Bunkers Total | 5 bunkers | 4,090 sq ft / 0.09 acres / 380.0 m ² | 818 sq ft / 76.0 m ² | Sand refill, labor planning, renovation scope |





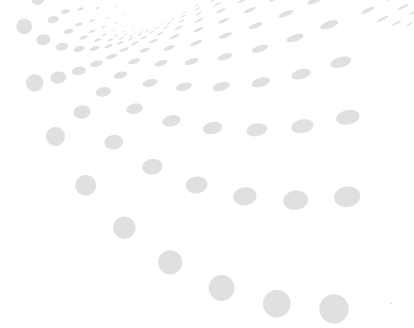
Bunker Planning Note

Bunker area data gives the maintenance team a clearer basis for estimating sand quantities, labor needs, and renovation scope.

Final sand volume should be confirmed after checking existing sand depth, drainage condition, bunker edge condition, and the course's target playing standard.

| Refill Depth | Total Bunker Area | Estimated Sand Volume |
|--------------|----------------------|-----------------------|
| 25 mm | 380.0 m ² | 9.5 m ³ |
| 50 mm | 380.0 m ² | 19.0 m ³ |
| 75 mm | 380.0 m ² | 28.5 m ³ |





Turn Area Data Into Material Planning



Use measured course areas to estimate fertilizer, spray volume, topdressing material, sand refill, and other maintenance requirements before work begins.

| Work Type | Measured Area | Example Rate | Estimated Requirement |
|---------------|---------------------------|---------------------|-----------------------|
| Fertilization | 78,641 sq ft / 1.81 acres | 35 g/m ² | 255.7 kg |
| Spraying | 78,641 sq ft / 1.81 acres | 500 L/ha | 365.3 L |
| Topdressing | 13,993 sq ft / 0.32 acres | 5 mm depth | 6.5 m ³ |
| Sand Refill | 4,090 sq ft / 0.09 acres | 50 mm depth | 19.0 m ³ |

Applications:

Fertilization · Spraying · Topdressing · Sand Refill · Budget Planning · Contractor Quotes